

# Installation Guide

## 安裝說明書

VEHICLE APPLICATIONS  
適用車型

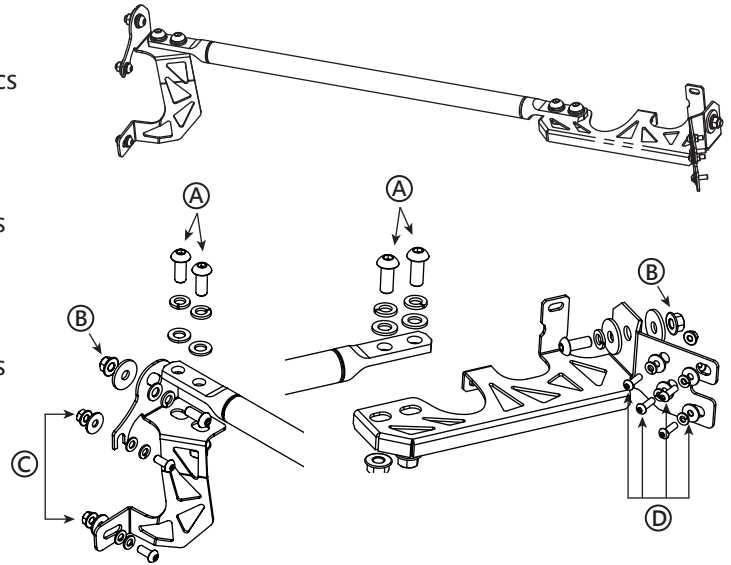
HONDA FIT 3

PART NO. 8561

### Contents 內含配件

※ Please apply hand tools for installation  
安裝過程請使用手工工具

1. Aluminum Alloy Brace 510mm 鋁合金拉桿 1PCS
  2. Bracket (RH) 拉桿支架(右) 1PCS
  3. Bracket(LH)/ Brake Master Cylinder Stoper  
拉桿支架(左/煞車總幫頂桿) 1PCS
- (A) Hex Socket Button Head Cap Screw M12x1.75x30 內六角半圓頭螺絲 4PCS  
Spring Washer M12 彈簧華司 4PCS  
Washer M12 華司 4PCS  
Flange Nut M12x1.75 凸緣螺帽 4PCS
- (B) Hex Socket Button Head Cap Screw M10x1.5x25 內六角半圓頭螺絲 2PCS  
Flange Nut M10x1.5 凸緣螺帽 2PCS  
Washer M10x32mm華司 4PCS  
Spring Washer M10 彈簧華司 2PCS
- (C) Hex Socket Button Head Cap Screw M8x1.25x30 內六角半圓頭螺絲 2PCS  
Flange Nut M8x1.25 凸緣螺帽 2PCS  
Spring Washer M8 彈簧華司 2PCS  
Washer M8 華司 4PCS
- (D) Hex Socket Button Head Cap Screw M6x1.0x20 內六角半圓頭螺絲 4PCS  
Spring Washer M6彈簧華司 4PCS  
Washer M6 華司 4PCS  
Nut M6 螺帽 2PCS



### Installation tips 安裝提示

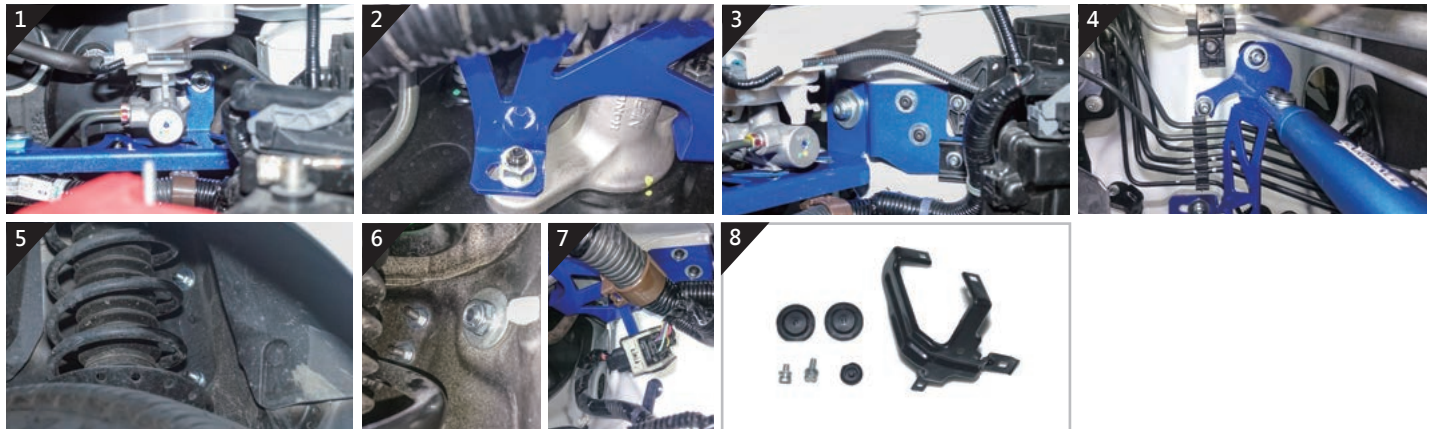


Fig.1/2/3: Installation position of LH bracket. Fix the brake master cylinder by stock nuts.

圖1、2、3 為左支架安裝位置·煞車總幫固定使用原車螺帽

Fig.4: Installation position of RH bracket.

圖4 為右支架安裝位置

Fig.5/6: Position of nuts inside the wheel arch.

圖5、6 為輪拱內螺帽對鎖位置

Fig.7: Fix position of harness cable underneath the LH bracket.

圖7 左支架下方·插頭線組固定位置

Fig.8: Removed stock covers and screws.

圖8 原廠拆下支架橡膠蓋螺絲·請妥善保留

### Warning 安全提示

Installation should only be performed by licensed mechanics who have the necessary skill and tools to do the job correctly and safely.

安裝需由合格的專業技師及工具執行·以確保安裝過程的正確與安全

When swapping the suspension kits, be sure to note the routing and mounting position of all wires, cables and bolts orientation, certain damage might be caused by reinstalling differently from the original factory position. Please refer to factory manual for proper installation and safety stands.

當更換您車輛的懸吊套件時·請記下您的線組與管線安裝位置·非原廠相同的安裝位置可能會造成元件之損壞·造成車輛的危險·請參考原廠車輛手冊



TEL: +886 3 5370822 FAX: +886 3 5373027  
E-MAIL: info@hardrace.com WEBSITE: WWW.HARDRACE.COM

